



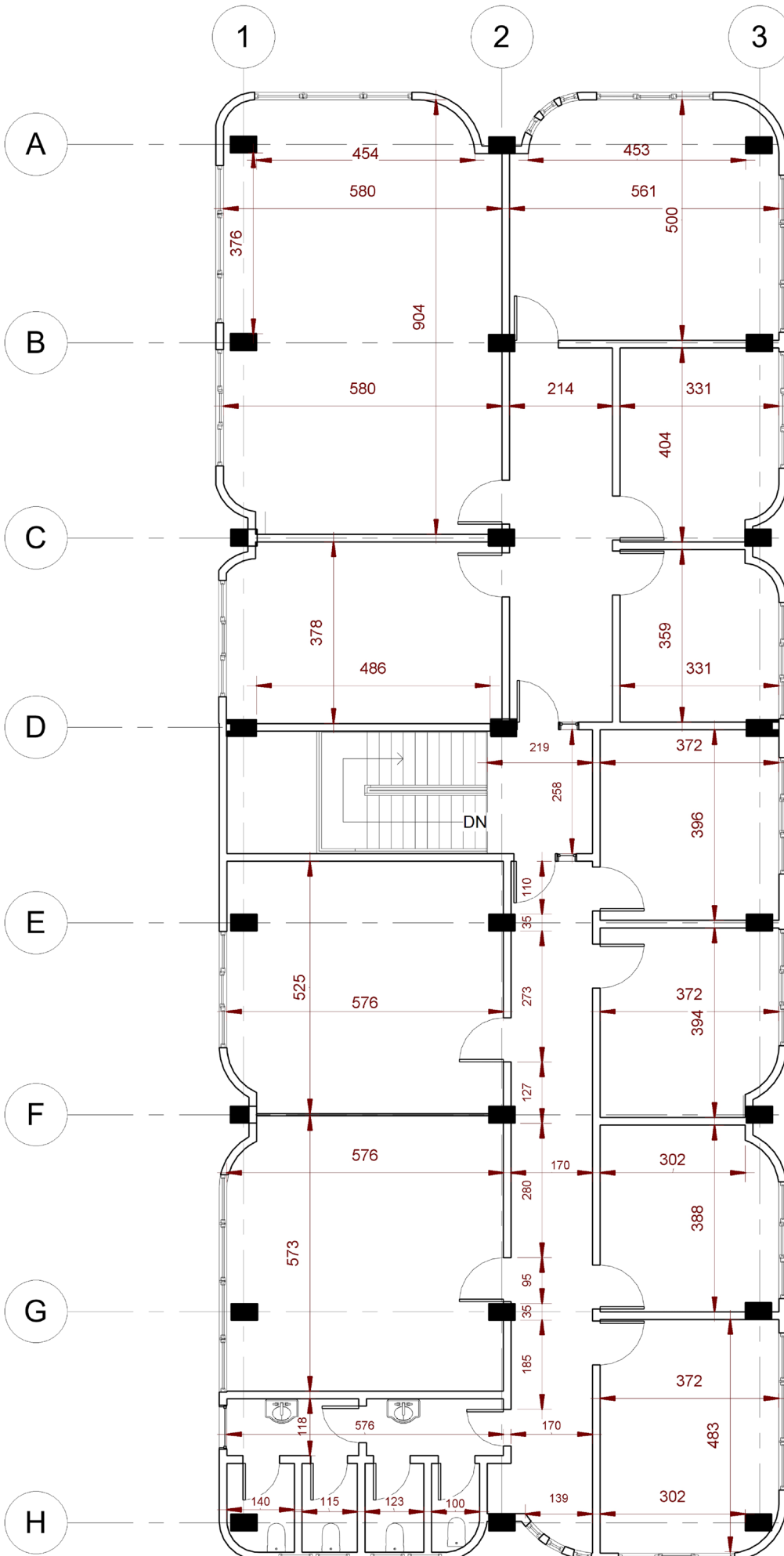
Interior Design Proposal

NOVEMBER 18, 2023



2nd Floor Interior Design Proposal

CURRENT PLAN OF 2nd FLOOR

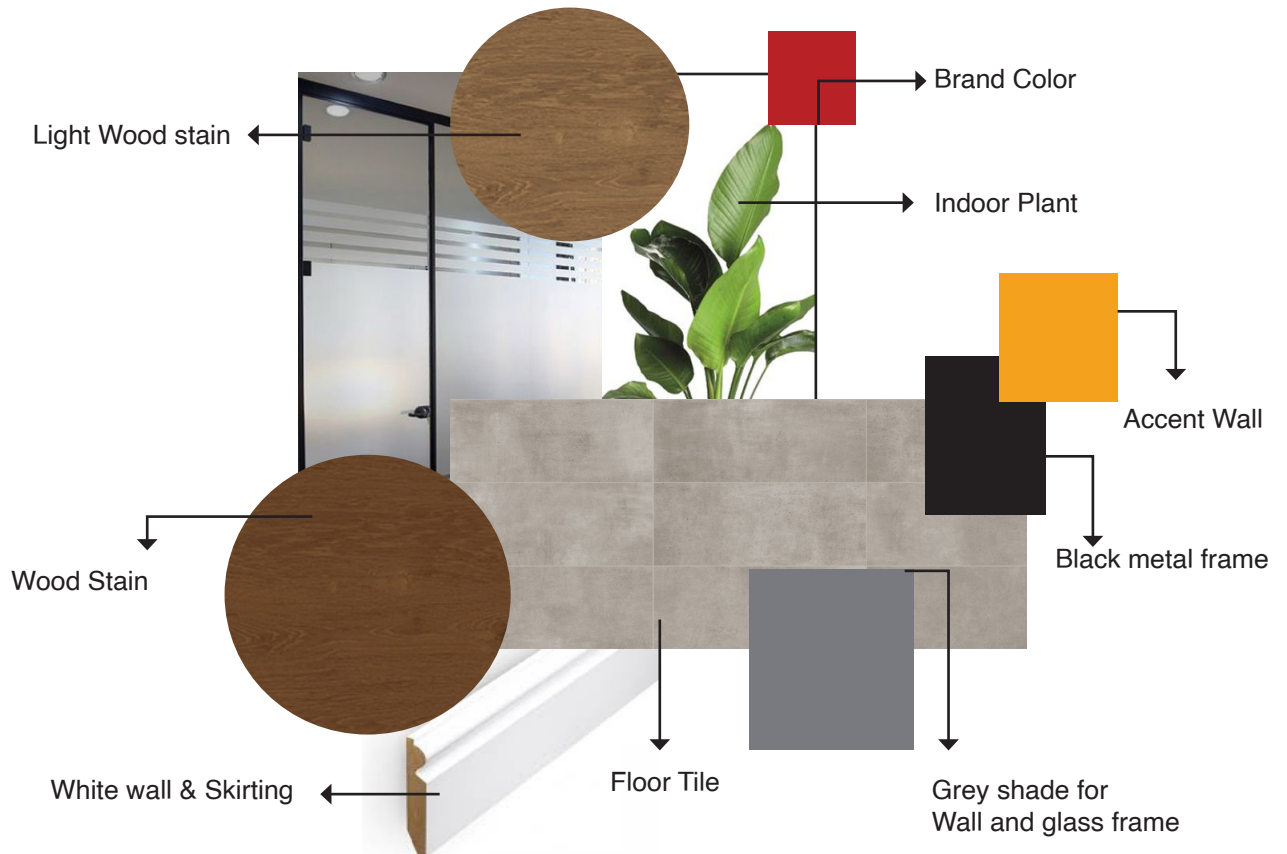


CURRENT IMAGE OF 2nd FLOOR OFFICE

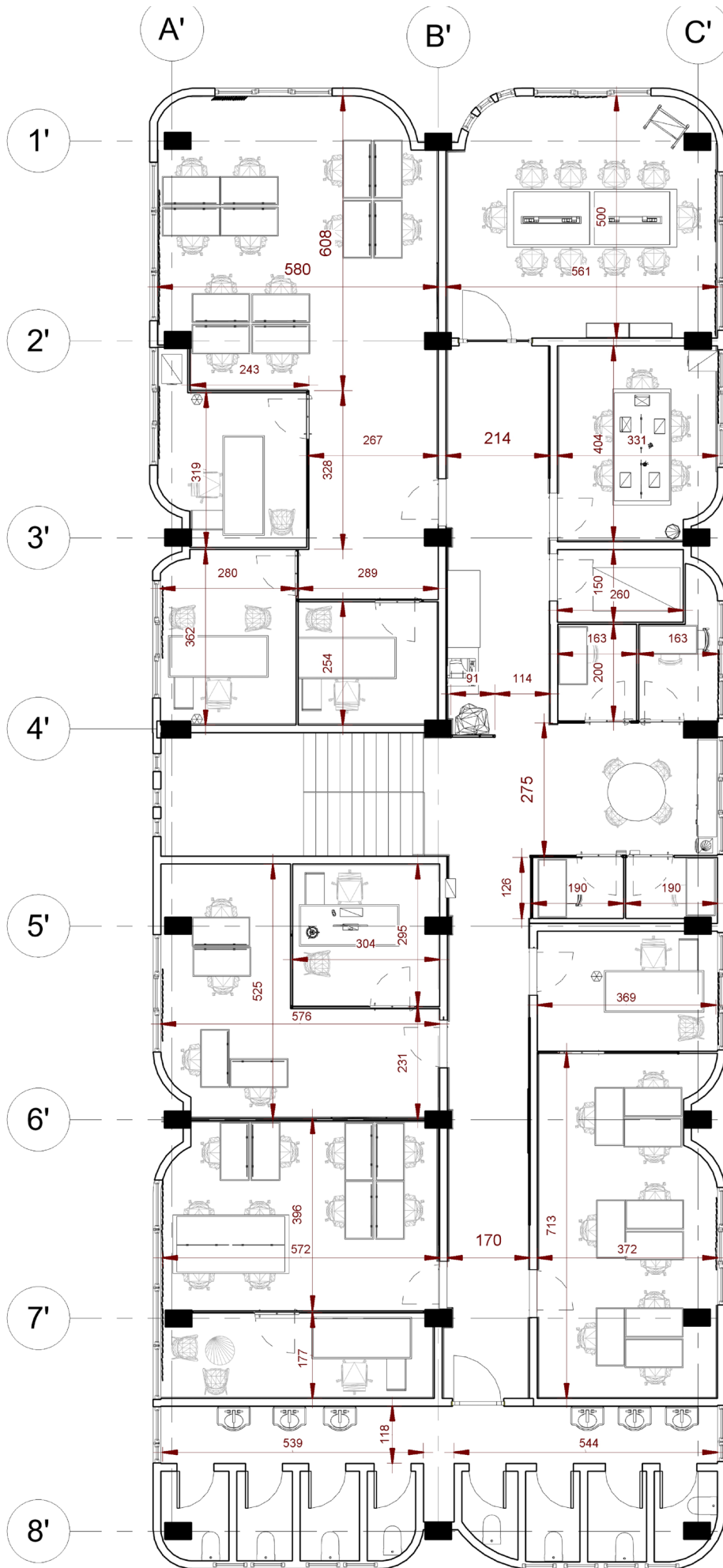


MATERIAL ANALYSIS FOR INTERIOR

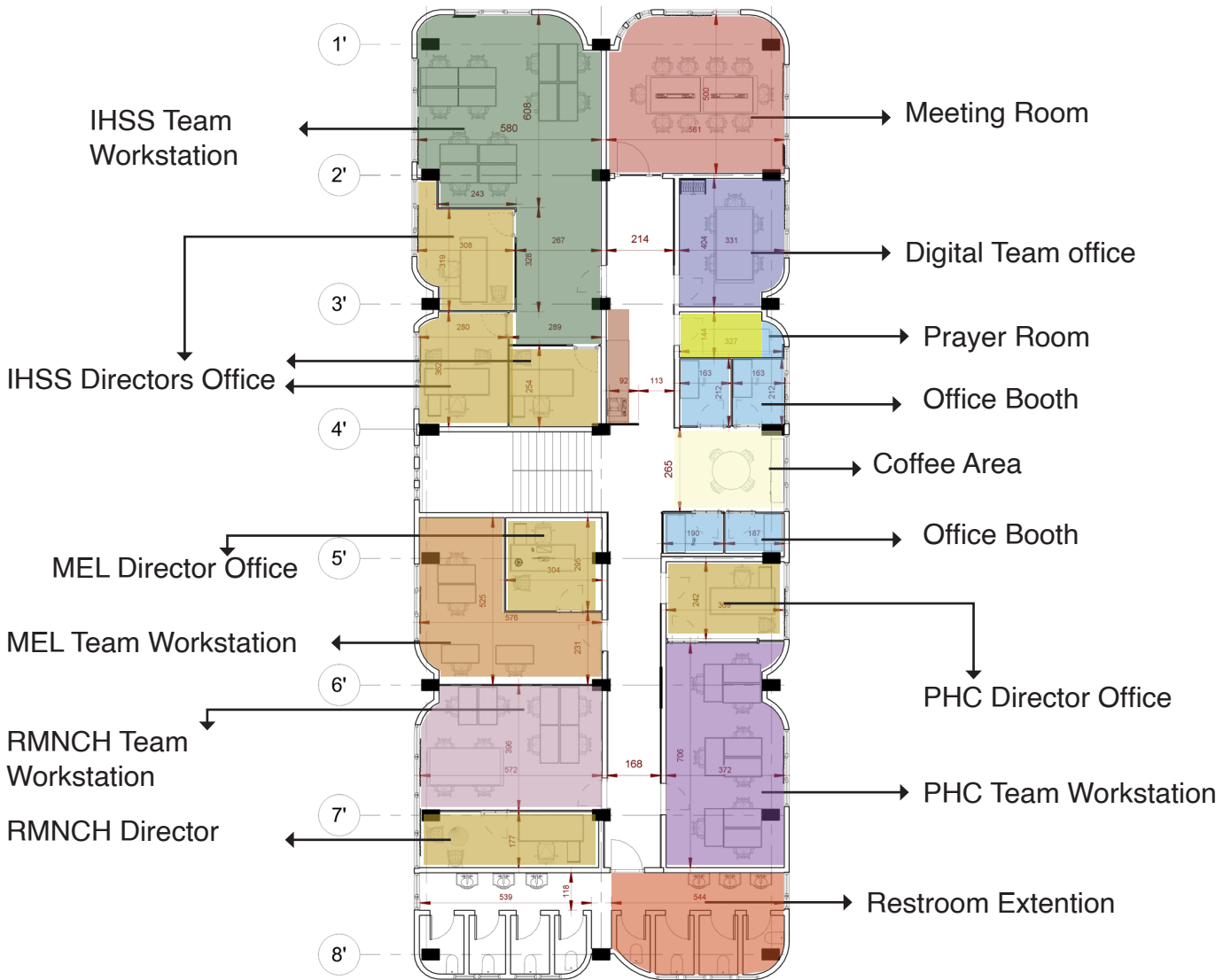
These material will be the base for redesigning the second floor and as a guideline for furnishing as well

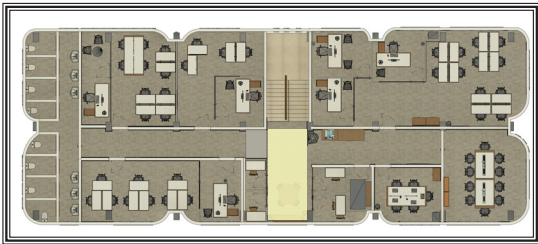


PROPOSED PLAN OF 2nd FLOOR



PROPOSED OFFICE ARRANGEMENT





Coffee Area

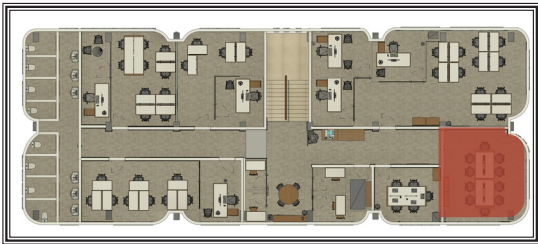
Accommodate max. 6 people





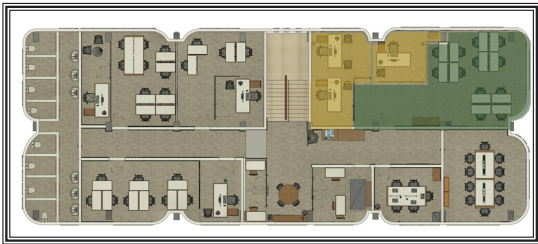
Corridor Area





Meeting Room
Accommodate 10 people





IHSS Department
Accommodate 3 Directors & 12 staffs





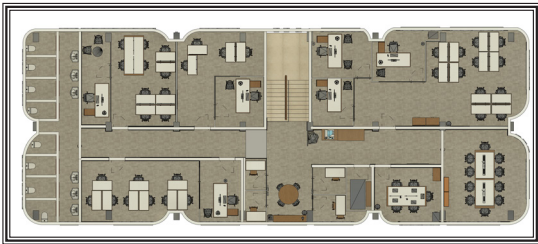
Digital Team
Accommodate 5 staffs





Private Office Booth
Accommodate 4-5 staff in total





Copy Station
Service usable for the all Staff





RMNCH Department
Accommodate 1 Director & 10 staffs





PHC department
Accommodate 1 Director & 9 staffs





MEL Department
Accommodate 1 Director & 4 staffs





Current Corridor

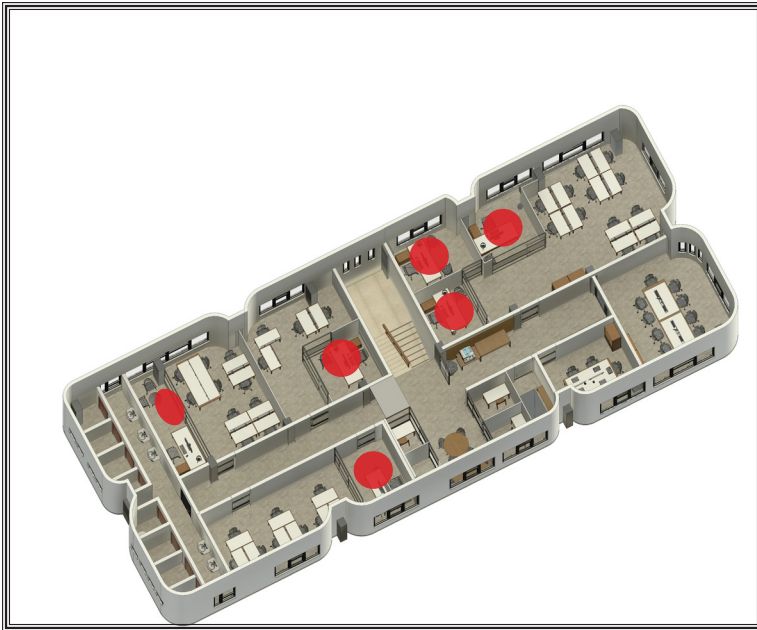


Proposed Corridor



DIRECTORS OFFICE

In total 6 director offices



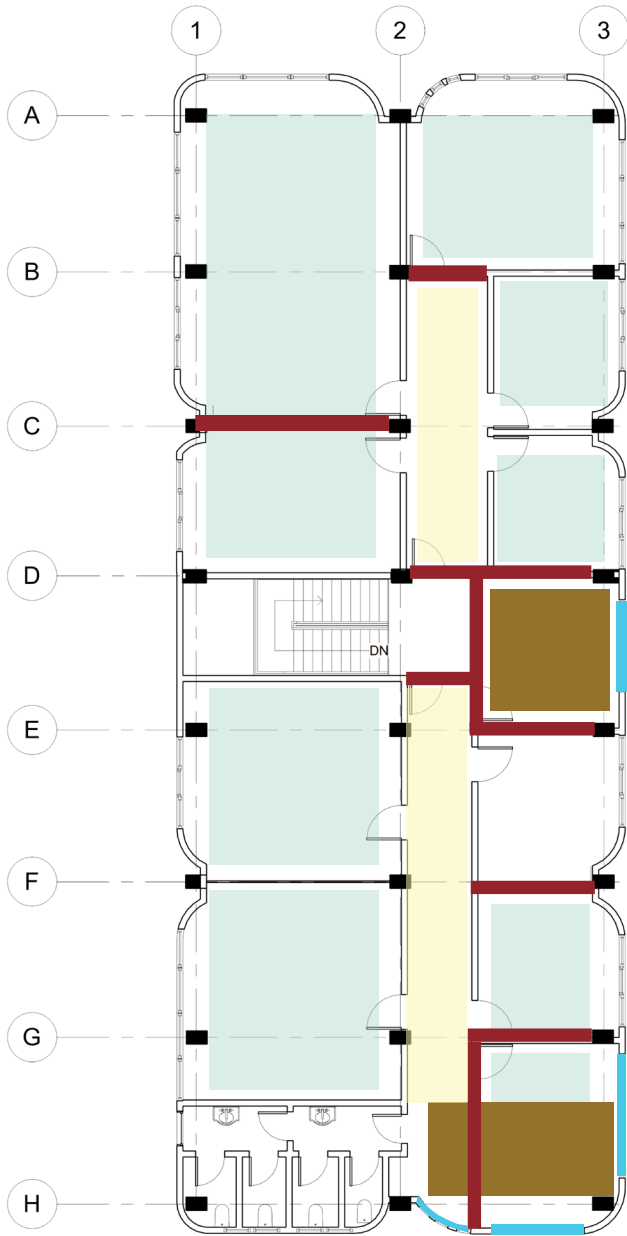
Proposal:
Similar Desk that accommodate stor-
age area
Partition using framed glass with
translucent sticker
Wood stain: Similar to existing Desks








AREAS PROPOSED TO BE RE-ARRANGED/ RE-DESIGNED & DEMOLISHED

GENERAL DIAGRAM

What is proposed to be redesigned and constructed:



-  Walls to be removed
-  Areas to be Constructed
-  Areas to be re-arranged
-  Ceiling work construction
-  Window to change

EXISTING OFFICE FURNITURE

120*240 cm with drawer



120*240 cm without drawer



120*240 cm - 6 pcs

80*130 cm Copy table 1 pc



80*180 cm Desk-4 pcs



60*200cm- 3 pcs



70*70cm Table - 1 pc



60*120 cm with drawer



60*120 cm without drawer



60*120 cm - 20 pcs

NEW ADDITIONAL FURNITURE PROPOSED



Directors Office Desk



Copy Station Area Table



Coffee Area Table and Chair



Meeting Office Table



Coffee Area Buffet